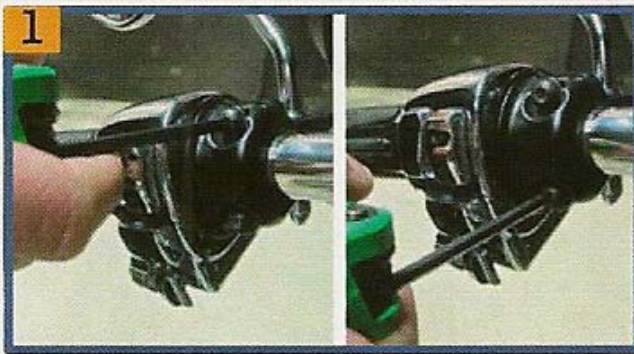


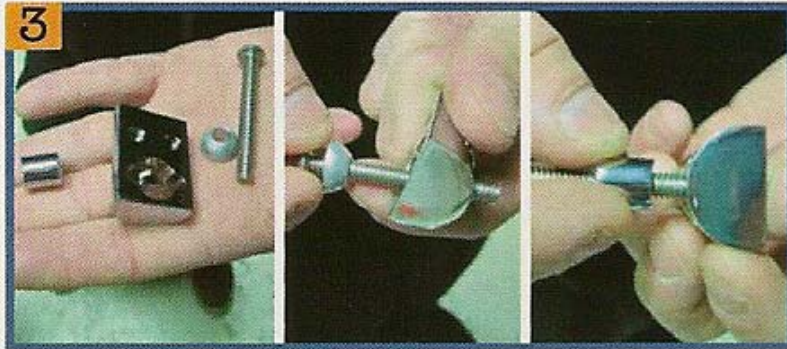
# Rider's Claw Assembly Instructions



Loosen the top and bottom bolts of the existing mirror clamp fixture.

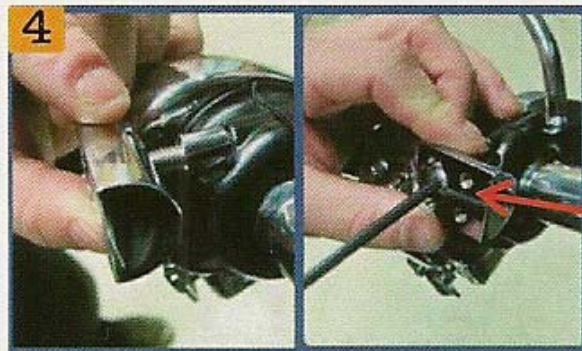


Remove the top bolt



Assemble the Rider's Claw components.

Note the stand off has a radius side that matches the back plate radius.



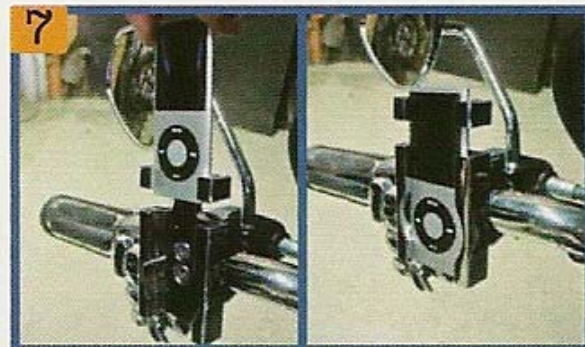
Position the assembled back plate and tighten into clamp assembly.



Tighten bottom bolt



Position face plate and fasten



Slide in device and connect with supplied auxiliary cord

## Suggested Stealth Auxiliary Cord Assembly



Plug right end angle into iPod



Use plastic ties (supplied) to tie auxiliary cable to electrical switch wire cable ( left or [right side](#)). Push straight male end through fairing where handle bar exits. Turn front wheel far right and reach up under inner fairing and pull cord slack through.



Run cord across inside of inner fairing to right side.

[Remove Torx screw from inner fairing \(see red arrow\).](#)

[Pull back inner fairing about 1/2 inch and retrieve cord.](#)

[Run cord up to radio jack between inner fairing and radio.](#)

[Press inner fairing against cord and replace Torx screw](#)

[Coil any excess cable slack and tie up behind inner fairing.](#)



Approximately 1"-2" of cord is all that is seen

For a right side mount... follow instructions in [Blue](#)